



Treatment chairs

and medical trolleys



www.meble-medyczne.pl/en/



TREATMENT CHAIR

FOZA SURGI

- Through its functionality and additional equipment, it ensures high comfort of the patient's stay or visit.
- Seat height adjustment is carried out by means of an electrical column.
- Adjustment of the angles of inclination of the backrest segments as well as the seat and lower leg is carried out by means of electrical actuators.
- A headrest is mounted in the backrest segment.
- Headrest of the chair made of a special polyurethane casting, which stabilizes the patient's head through a special recess. The headrest of the chair is adjustable in several planes to minimize the possibility of moving the head during treatments.



Treatment chair is used in oral and maxillofacial surgery, dental surgery, ophthalmic surgery and treatment of AMD - macular degeneration (intravitreal injections).

- The chassis of the seat is equipped with a chassis with a central wheel lock.
- The segments of the seat, back back and lower legs are upholstered.
- The base of the chair, the backrest segment, the seat segment, have covers made of ABS plastic.
- Euro slats for equipment can be mount in the seat and backrest.
- Alternatively, instead of polyurethane armrests, the seat may have side railings
- The chair can be controlled from a wired remote control or a foot panel.
- The seat is equipped with control with an individual program. The system allows you to implement selected functions with one button, such as the starting position, Trendelenburg and programming the favorite position



Technical specification

Total length, mm	2180
Total width, mm	875
Seat width, mm	620
Height adjustment range, mm	575 - 925
Adjustment of backrest segment, °	80
Trendelenburg position, °	-13
Antitrendelenburg position, °	-3
Angular adjustment of the lower leg segment, °	-73
Dimensions of the top side, mm	248 x 348
The maximum permissible load, kg	250
The maximum load of the table top, kg	10
Period of use	10 years



TREATMENT CHAIR FOZA SURGI

TREATMENT CHAIR

FOZA MULTI

- Seat height adjustment is carried out by means of an electrical column.
- Through its functionality and additional equipment, it ensures high comfort of the patient's stay or visit.
- The base of the chair, the backrest segment, the seat segment, have covers made of ABS plastic
- The seat is equipped with control with an individual program. The system allows you to implement selected functions with one button, such as the starting position, Trendelenburg and programming the favorite position
- Adjustable high and tilt angle of armrests
- Large choice of upholstery colours
- Possibility to installed the bolster, table and infusion stand



Multifunction treatment chair is designed to carry out examinations of patients. actions and procedures: blood sampling, dialysis and chemotherapy.

- Adjustment of the backrest segment. adjustment of the seat segment. adjustment of the segment of the shank. which is integrated with the seat segment are realized with electric drives.
- The chair is equipped with chassis with individual lock of the wheels.
- Control height adjustment and angles of the segments chair are implemented electrically. Adjustments of the armrests are made mechanically.
- This chair is controlled from the wired remote control. It's functionality and additional equipment ensures a high comfort of the patient.



Technical specification

Total length, mm	2160
Total width, mm	950
Seat width, mm	605
Height adjustment range, mm	530-970
Adjustment of backrest segment, °	75
Trendelenburg position, °	- 15
Adjustment of the shank segment, °	- 30
Adjustment of the armrests, °	- 20
Dimensions of the top side, mm	248x348
The maximum permissible load, kg	180 or 225
The maximum load of the table top, kg	10
Period of use	10years

TREATMENT CHAIR FOZA MULTI

TREATMENT CHAIR

FOZA DONA / MOBILE

- Adjustable backrest and leg segment
- Adjustable Trendelenburg position
- Adjustable tilt angle of armrests
- Adjustable armrests
- Aesthetic covers of ABS plastic
- Large choice of upholstery colours
- Possibility to install other equipment



Treatment chair is designed to carry out examinations of patients. actions and procedures: blood sampling, dialysis, chemotherapy.

This chair is made of steel pipe coated with powder coating, UV-resistant, damage mechanical means of disinfecting-washing.

Segments of the pallet and headrest are upholstered. Segment of the back have cover made of ABS plastic.

Adjusting the angle of the segments back and shank is carried out by means of gas springs by releasing the appropriate lever.



Technical specification

Total length, mm	1980
Total width, mm	880
Seat width, mm	550
Height of the seat, mm	530
Adjustment of backrest segment, °	75
Trendelenburg position, °	- 7
Adjustment of the shank segment, °	5 do 20
Adjustment of the armrests, °	- 20 do 60
Dimensions of the top side, mm	248x348
The maximum permissible load, kg	150
The maximum load of the table top, kg	10
Period of use	10years

TREATMENT CHAIR FOZA DONA

TREATMENT CHAIR

FOZA BASIC MOBILE

- Adjustable backrest and leg segment
- Adjustable Trendelenburg position
- Adjustable high and tilt angle of armrests
- Possibility to install other equipment
- Aesthetic covers of ABS plastic
- Large choice of upholstery colours
- Individual lock the rear wheels



Treatment chair is designed to transport and carry out examinations of patients, actions and procedures: blood sampling, dialysis, chemotherapy.

This chair is made of steel pipe coated with powder coating, UV-resistant, damage mechanical means of disinfecting-washing.

The chair is equipped with chassis with individual lock the back wheels.

Segments of the pallet and headrest are upholstered. Segment of the back have cover made of ABS plastic.

Adjusting the angle of the segments back and shank is carried out by means of gas springs by releasing the appropriate lever.

This chair is designed to palliative care and different medical facilities.

It is used to treatments: blood collection, dialysis, chemotherapy and laryngological and ophthalmological treatments. It can be also good solution to home care.



Technical specification

Total length, mm	1870
Total width, mm	880
Seat width, mm	550
Height adjustment range, mm	530
Adjustment of backrest segment, °	75
Trendelenburg position, °	- 7
Adjustment of the shank segment, °	5 to 20
Adjustment of the armrests, °	- 20 do 60
Dimensions of the top side, mm	248x348
The maximum permissible load, kg	150
The maximum load of the table top, kg	10
Period of use	10years

TREATMENT CHAIR FOZA BASIC MOBILE

TREATMENT CHAIR

FOZA BASIC PLUS

- Mechanical adjustable chair
- Adjustable backrest and leg segment
- Adjustable height and tilt angle of armrests
- Adjustable Trendelenburg position
- Aesthetic covers of ABS plastic
- Large choice of upholstery colours
- Possibility to install other equipment



Treatment chair is designed to transport and carry out examinations of patients, actions and procedures: blood sampling, dialysis, chemotherapy.

FoZa Basic Plus is made of steel pipe coated with powder coating, UV-resistant, damage Mechanical means of disinfecting-washing.

Segments of the pallet and headrest are upholstered. Segment of the back has cover made of ABS plastic.

Adjusting the angle of the segments back and shank is carried out by means of gas springs by releasing the appropriate lever.

This chair is designed to medical facilities.

It is used to treatments: blood collection, dialysis, chemotherapy and laryngological and ophthalmological treatments.



Technical specification

Total length, mm	1870
Total width, mm	880
Seat width, mm	550
Seat height, mm	500
Adjustment of backrest segment, °	75
Trendelenburg position, °	-7
Adjustment of the shank segment, °	7 to -70
Adjustment of the armrests, °	-20 to 60
Height adjustment of the armrests, mm	150 to 250
Dimensions of the top side, mm	248 x 348
The maximum permissible load, kg	150
The maximum load of the table top, kg	10
Period of use	10 years

TREATMENT CHAIR FOZA BASIC PLUS

TREATMENT CHAIR

FOZA BASIC

- Mechanical adjustable chair
- The adjustable backrest segment with gas spring
- Adjustable high and tilt angle of armrests
- Aesthetic covers of ABS plastic
- Large choice of upholstery colours
- Possibility to install individually locking wheels and other equipment



Treatment chair is designed to transport and carry out examinations of patients, actions and procedures: blood sampling, etc.

This chair is made of steel pipe coated with powder coating, UV-resistant, damage Mechanical means of disinfecting-washing. Segments are upholstered. Segment of the backrest has cover made of ABS plastic.

Adjustment of the backrest segment is carried out by means of gas springs by releasing the appropriate lever.

This chair is designed to medical facilities. It is used to treatments:

blood collection, dialysis, chemotherapy and laryngological and ophthalmological treatments.



Technical specification

Total length, mm	1445
Total width, mm	880
Seat width, mm	550
Seat height, mm	530
Adjustment of backrest segment, °	75
Adjustment of the armrests	- 20 to 60
Height adjustment of the armrests, mm	150 to 250
Dimensions of the top side, mm	248 x 348
The maximum permissible load, kg	150
The maximum load of the table top, kg	10
Period of use	10 years

TREATMENT CHAIR FOZA BASIC

Additional equipment available for treatment chairs FOZA

- **Adjustable side table top** – for FOZA MULTI



- **Side table top** – for other FOZA Chairs



- **Bolster**

(FOZA MULTI has it in standard)



- **Infusion stands**– four armed stands



Blood donation armchair FL-1



- Chair on metal powder coated frame. Seat segment, back segment armrest and headrest upholstered.
- Adjustable headrest, armrest and backrest
- Product dedicated to medical facilities

Technical specification

Total width, mm	800
Total length, mm	780
Base width, mm	655
Base length, mm	730
Total height, mm	1120/1280
Permissible load, kg	120

Cabinet chair

KL COMFORT



- Upholstered seat and backrest with washable coated fabric.
- Multi-block/ synchro mechanism for locking in different positions.
- Chrome base and column
- Wheels with soft surfaces- rubber, adjustable armrests.
- Product dedicated to medical facilities

Technical specification

Total high min, mm	1015
Total high max, mm	1150
Total width, mm	665
Min. high of the seat, mm	480
Max. high of the seat	610
Width of the back segment,mm	480
Height of the back segment,mm	565
Diameter of the base, mm	600

MEDICA STOOLS

MEDICA



MEDICA SPS



MEDICA STS



· **STOOLS**– five pointed chromed base, chrome pneumatic column,synchro system,foot seat height adjustment system

· **MEDICA**– upholstered round seat

· **MEDICA PSP**– polyurethan sadle seat

· **MEDICA STS**– upholstered sadle seat

· Product intended for health care units, hospitals and sanatoriums.

Technical specification MEDICA

Min hight, mm	605
Maximum permissible load	865
Maximum height, mm	865
Diameter of seat, mm	390
Diameter of the base, mm	640
Maximum permissible load, kg	120

Technical specification MEDICA SPS and MEDICA STS

Min hight, mm	570
Maximum height, mm	820
Diameter of the base, mm	640
Maximum permissible load, kg	120

Stainless steel table

LABO



- Table made from stainless steel.
- Drop-in table top regulated by hydraulic pump
- T-shaped base with three double castors with breaks Ø 100mm
- Profiled work surface to prevent slipping or falling objects
- Product dedicated to medical facilities especially operating and treatment rooms.

Technical specification

Base T-shape (width x length) mm	450-750
Table top high min/max, mm	902/1302
Table top dimensions, mm	445x745x2
	5
Middle top dimensions, mm	401x701
Maximum load, kg	15
Adjustable height of the table top	

Bedside table

SOLO



- Structure of the base frame allows the table to be moved closer to the bed or chair
- T-shaped base with three double castors with breaks on the back, Ø 50mm
- Adjustable height and angle of the top, desk made of HPL board covered with ABS with a 15mm high Edge around the perimeter
- One part of the table is fixed, second fully adjustable
- Profiled work surface to prevents slipping or falling objects
- Maximum permissible load - 15kg
- Product dedicated to medical facilities especially operating and treatment rooms.

Technical specification

External dimensions, mm	815x460x763
Table top dimensions, mm	605x460
Fixed table top dimensions, mm	205x460
Total weight, kg	15,5
Tilt of the table top, °	30-60
Maximum permissible load, kg	15

Dental assistants

AS-3



AS-4



AS-5



Front colours available:



Side colours available:



- Assystors made from laminated board, fronts with acrylic sheet.
- Drawers with auto-breaking system, handles not protruding beyond the outline of the cabinet
- Glass top limiters- prevents slipping items
- Assistors AS-3 & AS-4 with chrome high adjustment column
- Assistor AS-5 fitted with wheels

Technical specification AS-3

Total width, mm	540
Total depth, mm	510
Total height min, mm	840
Total height max, mm	1050
Diameter of the base, mm	650
Permissible top load, kg	10

Technical specification AS-4

Total width, mm	540
Total depth, mm	510
Total height min, mm	965
Total height max, mm	1170
Diameter of the base	650
Permissible top load, kg	10

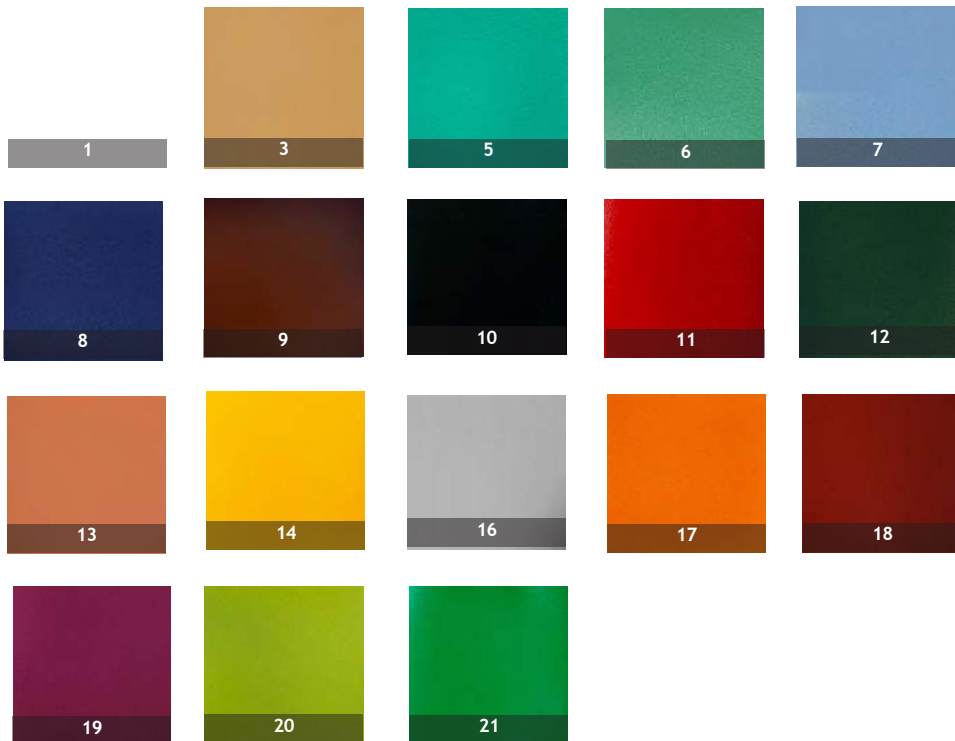
Technical specification AS-5

Total width, mm	540
Total depth, mm	510
Total height, mm	890
Permissible top load, kg	10



This product is CE marked.

The product and all its versions (if it has one) can be made in one of 18 colors available.



www.meble-medyczne.pl/en/



HEADQUARTERS/ OFFICE

U.B.M-KATARZYNA
KOTASIŃSKA

ul. Pułaskiego 4B

46-100 Namysłów

woj. opolskie

POLAND / UNITED EUROPE

EXPORT DEPARTMENT

Tel. +48 77 412 70 78

Mobile: +48 572 659 800

Mobile: +48 572 954 984

Mobile: +48 500 101 650

export@meble-medyczne.pl

WORK HOURS

Mon.-Fri.: 8.00 - 16.00